



# Introducing the Video Collaboration Solution Team Kit

This entry level web conferencing kit includes equipment for high quality video conferencing and collaboration for small teams

**MSRP: \$1,474**

**SKU: HC-TEAM-VCS-G2-NOPC**



**Conferencing**



**Collaboration**



**Integration**



**Installation Ready**

## WHAT'S INCLUDED

Included with every HuddleCamHD Team Kit is a 1080p 3X optical zoom USB conference camera and a wireless USB HuddlePod Air Speakerphone.

Quick Launch PE is a meeting room dashboard software allowing your team to customize the meeting room experience and lock down the PC.

**QUICK  
LAUNCH**

**HuddleCamHD 3X**

**HuddlePod Air**



152 Robbins Rd, Downingtown, PA USA  
[www.HuddleCamHD.com](http://www.HuddleCamHD.com)



## PC RECOMMENDATION DELL OPTIPLEX 3070

### Details

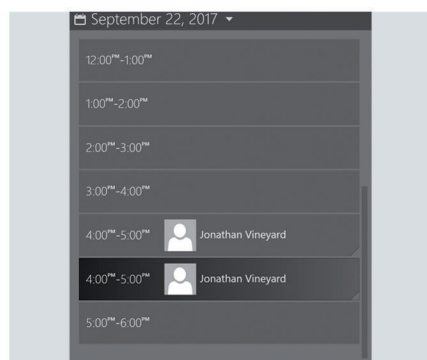
Computer	i5 processor, 256 GB SSD, 8GB
Operating System	Windows 10
Camera	3X Optical Zoom 1080p Camera
Microphone	HuddlePod Air
Wall Mount	Included (camera & computer)
Cabling	6' HDMI Cable
Additional	Microsoft Wireless Keyboard/Mouse

\* PC, LCD, & LCD mount not included with system.

## ONE SYSTEM FOR ANY SOFTWARE

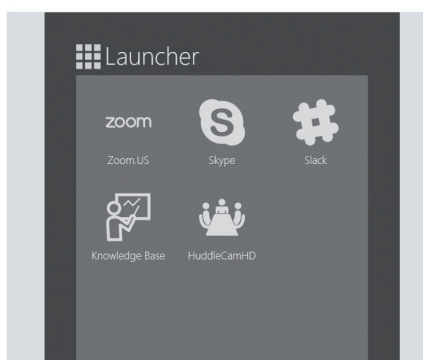
Quicklaunch is an easy-to-use multi-platform, one-click/one-touch application to join meetings, start applications, access data, play media, showcase your organization's content and business intelligence assets. It's included in both of our VCS kits for an easy to manage conference space.

## QUICKLAUNCH BENEFITS



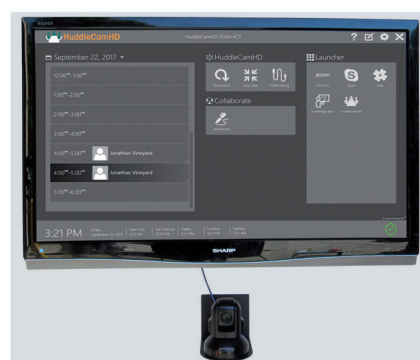
### Enhance Productivity

- ▶ Simplify the complicated collaboration experience with easy to use "one click" application launching.
- ▶ Customize your meeting workspace
- ▶ Consistent and easy user experience
- ▶ Use in open or locked down modes.



### Open Platform

- ▶ Easy integration with the leading video conferencing software including: Bluejeans, Vidyo, Skype and GoToMeeting.
- ▶ Easily switch between the persistent toolbar and desktop view with customized and tiered buttons
- ▶ Always in the state you expect with your organization's look and feel.



### Safe, Secure & Manageable

- ▶ For IT departments, it reduces training and support cost by providing a secure and manageable interface.
- ▶ Keep your confidential data secure with the 'Room Reset' feature
- ▶ Optional 'lock-down' mode to restrict usage of your Quicklaunch device and protect it against unwanted changes.

## HuddleCamHD 3X Gen2 Conferencing Camera

The HuddleCamHD 3X is ideal for small to medium sized meeting rooms. This camera is compatible with every system that accepts USB cameras.

**Model Number:**  
**HC3X-BK-G2 (Black)**  
**HC3X-WH-G2 (White)**  
<http://huddlecamed.com/huddlecamed-3x/>

### KEY FEATURES

- 3X Optical Zoom
- USB 2.0
- RS-232
- 1920 x 1080
- 82° Field of View
- Up to 30 fps
- 64 Presets
- IR Remote



**1. Lens**  
3x Optical Zoom

**2. IR Receiver**  
To receive IR remote controller signal

**3. Power LED**  
Blue LED lights when unit is powered and is dark in standby mode.

**4. IR Receiver**  
To receive IR remote control signal

**5. DC In 12V Socket**  
Only use the power adapter supplied with this camera

**6. IR Receiver**  
To receive IR remote control signal

**7. RS-232 In Port**  
Used for connecting RS-232 control to camera

**8. RS-485 In Port**  
Used for connecting RS-485 control to camera; & daisy chaining via PELCO-D

**9. USB 2.0 Interface**  
For video connection to PC (USB 2.0 port. Will also function in a USB 3.0 port as a USB 2.0 device)

### WHAT'S IN THE BOX

- 3X Zoom USB 2.0 Camera
- 12V/2.0A DC Power Adapter
- Mounts: Tripod Mount
- USB 2.0 Data Cable (16ft/4.8m)
- Serial Control Cable
- RS-232C to RS-485 Adaptor
- IR Remote Control
- User Manual



#### Image Sensor & Lens

Video CMOS Sensor	1/2.7" CMOS, 2.1 Mega Pixel
Resolution	1080p-30/25, 720p-30/25, VGA,
Frame Rate	up to 30fps (MJPEG)
Lens Zoom	3X Optical Zoom f = 3-10mm F2.0
Field of View	36° (tele) to 82° (wide)

#### Pan/Tilt Movement

Pan Movement	±340°
Tilt Rotation	Up: 90°, Down: 30°
Presets	64 Presets

#### Electrical Index

Power Supply Adapter	12V DC 2A
Input Voltage	12V DC (10.5-14V DC)
Input Power	24W (Max)
Working Environment	Indoor

#### Other

Mfg. Warranty	2 Years Parts & Labor
---------------	-----------------------

#### Physical

Material	Aluminum, Plastic
Dimensions (in.)	4.88 W x 5.7 H x 4.75 D (5.9 H max w/ tilt)
Dimensions (mm)	124 x 145 x 120 (150 H max w/ tilt)
Weight	1.66 lbs (0.75 kg)
Box Dimensions	8.75" x 8.88" x 7" (222 x 225 x 178 mm)
Boxed Weight	3.66 lbs (1.66 kg)
Operating Temperature	32°F to 113°F (0°C to 45°C)
Colors	Black, White, *Silver; * = Special Order

#### Rear Board Connectors

Video Interface	USB 2.0
Controller Signal Interface	Mini DIN-8 (RS232 IN, RS485 IN, PELCO-D IN/OUT)
Controller Signal Config.	Dip-Switch Pin 8/TTL Signal
Baud Rate	9600 bps
Power Supply Interface	DC 12V 2A

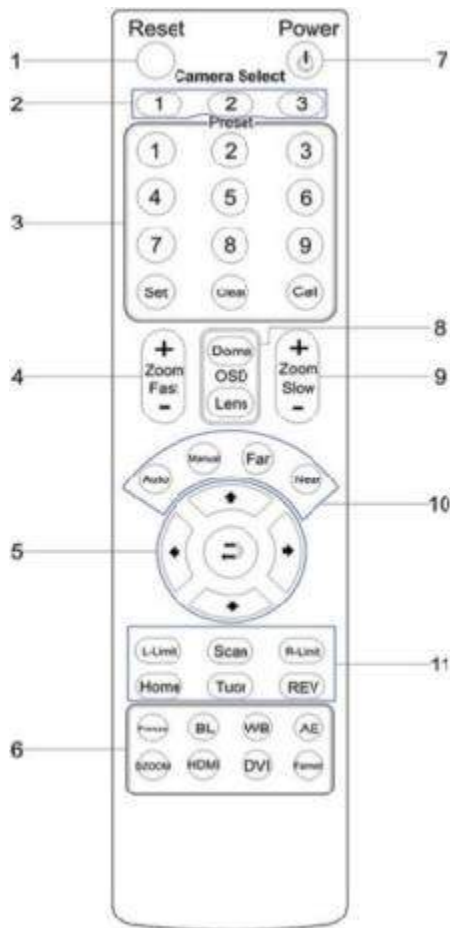
#### Quality Management System

QMS	Certified ISO9001: 2008
-----	-------------------------

## Compatibility

- |                      |                             |                         |  |
|----------------------|-----------------------------|-------------------------|--|
| • Windows 7/8/8.1/10 | • Easy Meeting              | • Polycom Real Presence | • Google Hangouts on Air                         |
| • Mac OSX            | • Facetime                  | • Radavision            | • YouTube Live                                   |
| • Acano              | • Fuzebox                   | • Spontania             | • Any app that supports the UVC camera interface |
| • Adobe Connect      | • Google Hangouts           | • Skype                 |  |
| • Blue Jeans         | • GoToMeeting               | • TurboMeeting US       |  |
| • Cisco Jabber       | • Lifesize                  | • Vidyo                 |  |
| • Cisco Webex*       | • Skype for Business (Lync) | • Zoom.US               |  |
- \*These apps do not support Image Flip

## IR Remote Control Functionality



1. **Reset**  
Restarts the camera and restores it to Factory Default settings. (Note: Will delete all saved settings and presets.)
2. **Camera Selection**  
Select which Camera to control via IR: 1, 2 or 3
3. **Preset Positions**  
1-9: Preset Positions  
Set: Set a Preset Position  
Clear: Clear a Preset Position  
Call: Call a Preset Position  
Note: If you want to set (or call) the first preset position to 1, you simply press number key "1", then press "Set" or "Call" to set (call) the position.
4. **Fast Zoom In/Out Control Zone**  
+: Zoom In quickly  
-: Zoom Out quickly
5. **Pan/Tilt Controller**  
↑ Tilt Up  
↓ Tilt Down  
← Pan Left  
→ Pan Right  
↻ Auto Pan (through Full pan range)
6. **Additional Function Zone**  
Model Dependent Functions  
Not applicable to this model
7. **Power Supply Switch**  
Switch for turning camera on/off (i.e. Working mode vs. Stand-By mode)
8. **OSD Menu Zone**  
Model Dependent Functions  
Not applicable to this model
9. **Slow Zoom In/Out Control Zone**  
+: Zoom In slowly  
-: Zoom Out slowly
10. **Focus Control Zone**  
Auto: Turn on Auto Focus  
Manual: Turn on Manual Focus  
Far: Set focus at a farther distance (requires Manual Focus)  
Near: Set focus at a nearer distance (requires Manual Focus)
11. **Pan/Tilt Function Zone**  
Home: Go to camera's Home position  
Rev: Enable image flip for ceiling mounting  
L-Limit: Sets left limit for Scan feature  
R-Limit: Sets right limit for Scan feature  
Scan: Auto pan to L&R limits  
Tour: Auto tour of all saved presets



## PC Recommendation

Online link:

[pcpartpicker.com/list/QR62BZ](https://pcpartpicker.com/list/QR62BZ)

### Main Features

- 9th Generation Intel i5 Processor
- 250GB SSD
- Windows 10
- 16GB (2x 8GB) DDR4 RAM



### PC Parts

CPU	Intel Core i5-9600K 3.7 GHz 6-Core Processor
Motherboard	ASRock B365M Pro4 Micro ATX LGA1151 Motherboard
Memory	Corsair Vengeance LPX 16GB (2x 8GB) DDR4-2400 Memory
Storage	Samsung 970 Evo Plus 250GB M.2-2280 NVME SSD
Case	Silverstone GD09B HTPC Case
Power Supply	Silverstone 300 W 80+ Bronze Certified SFX Power Supply
Operating System	Windows 10



### Compatibility

- Windows 7/8.1/10
- Mac OS X
- Acano
- Adobe Connect
- BlueJeans
- Cisco Jabber
- Cisco WebEx
- Easymeeting
- Facetime
- Fuzebox
- Google Hangouts
- GoToMeeting
- Lifesize
- Skype for Business(Lync)
- Polycom RealPresence
- Radavision
- Spontania
- Skype
- TurboMeeting.US
- Vidyo
- VSee
- Zoom.US
- Google Hangouts on Air
- YouTube Live

### Features

- 2.4 GHz Wireless
- Echo Cancellation
- Noise Cancellation
- 360° omnidirectional pickup
- Full Duplex
- Easy to use
- Auto Level Control
- Neoprene Travel Case

Model Number: HP-AIR-BK  
HP-AIR-WH

The HuddlePod Air is the ideal wireless speakerphone with an easy & reliable wireless connection.



### What's in the Box

- HuddlePod Air Speakerphone
- Wireless Receiver & Antenna
- Neoprene Travel Case
- User Manual
- USB 2.0 Cable (charge & power)
- USB Charger

- Power LEDs**  
Blue power on
- Speaker LED**  
Solid Blue: Mute  
Blinking Blue: Max Volume
- Volume Mute**  
Mute speakerphone volume
- Power**  
Turn speakerphone on/off
- Volume Up/Down**  
Controls speaker volume
- Mute Microphone**  
Mutes microphone
- Mic LED**  
Blue: Muted  
Blinking Orange: Low battery  
Solid Orange: Full charge
- USB 2.0 Plug**  
For power and charging
- 3.5mm Audio Jack**  
For connected headphones or similar devices
- Durable Wireless Receiver**  
In protective plastic case

### Specifications

#### Microphone Features

Echo Cancellation	256 ms echo cancellation
Audio Output	1/8" TRS headphone
Noise Cancellation	Intelligent NC up to 16db
Digital Equalizer	Built-in Digital EQ for stable audio
Battery Life	6-8 Hours, 4-5 hour charge time
Warranty	3 Years

#### Wireless Speakerphone Specifications

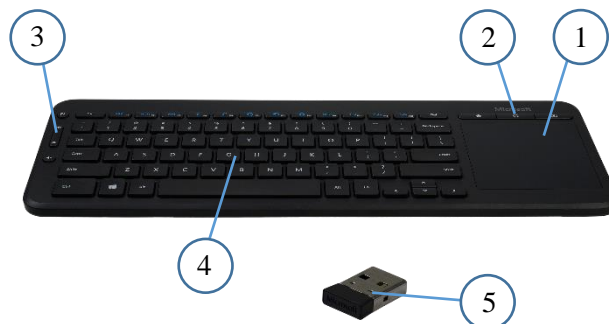
Weight	0.8 lbs. (0.36 kg)
Size	7" diameter, 1.5" height (177mm diameter, 38mm height)
Working Environment	Temp 0~40 °C, Humidity 20%~85%
Compatibility	MS WIN 7/8.1/10, Mac 10.5+, Android 4.4+
RF Frequency Range	2.400 GHz ~ 2.4835 GHz
Certifications	CE Mark (R & TTE Directive)

## All-in-One Media Keyboard

The All-in-One Media Keyboard has a full-sized keyset and an integrated multi-touch trackpad. Type, swipe, drag, zoom, and click with ease. It has customizable media hotkeys that put the web and your favorite music, photos, and movies at your fingertips. The keyboard also has a durable liquid resistant design.

### Key Features

1. Integrated multi-touch trackpad
2. Customizable media hotkeys
3. Easy access volume controls
4. Durable spill and drop resistant design
5. Wireless connectivity (USB)
6. Advanced Encryption Standard (AES) 128-Bit Encryption
7. Also works with select TVs and gaming consoles



#### Performance Parameters

104 key configuration (English North American)

Frequency Range: 2.1 GHz

Power: AAA alkaline batteries (included)

Battery Life: 9 months (typical)

Compliance: FCC Class B, ROHS, REACH

Encryption AES:

This keyboard features Advanced Encryption Standard (AES\*) technology, which is designed to help protect your information by encrypting your keystrokes. Each keyboard is permanently paired with its receiver at the factory – no key information is ever shared over the air.

#### Warranty

1-year manufacturer's warranty

#### Physical Parameters

Keyboard L x W x H (in.) 14.4 x 5.2 x 0.76

Keyboard L x W x H (mm) 367 x 132 x 19.4

Keyboard Weight 15.3 oz (434g)

Transceiver L x W x H (in.) 0.76 x 0.51 x 0.17

Transceiver L x W x H (mm) 18.3 x 13.1 x 4.4

Transceiver Weight 0.05 oz (1.5g)

#### Compatibility

Operating Systems: Windows, Linux, Mac OS

Select USB HID compliant Smart TVs and gaming consoles

#### Wireless Connection

Up to 33 ft. (10m) range

## HuddleCamHD

### Small Universal Wall Mount

HuddleCamHD

#### Features

- Mounts directly to wall with supplied hardware
- Black or White powder coat finish provides long lasting durability
- Universally compatible with all center mount cameras
- Mounting hardware included
- 3-year warranty

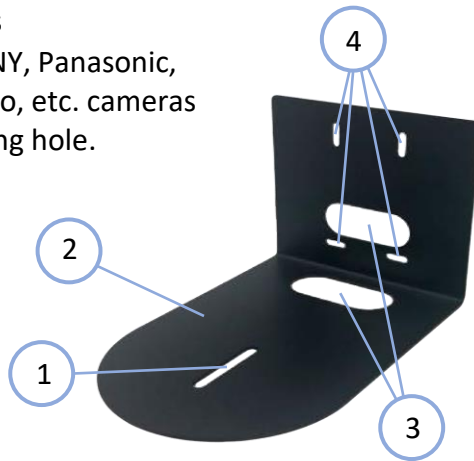
Model Number: HCM-1-BK / HCM-1-WH

#### Compatibility

- All small based HuddleCamHD cameras
- All PTZOptics cameras
- Most small based SONY, Panasonic, Cisco, Polycom, Vaddio, etc. cameras with a 1/4-20 mounting hole.



This Universal Thin Profile Wall Mount was designed specifically for an ideal way to wall mount a camera above or below a plasma or LCD monitor. Constructed from heavy gauge steel, this mount comes with a 3-year manufacture warranty.



**1. Slot for 1/4-20 machine screw**  
Secures camera to mount

**2. Mount Base**  
5 11/16" wide universal metal camera tray

**3. Cable Access**  
Convenient cable access under mount or through wall

**4. Wall Mounting Holes**  
Precut 4 post pattern fits U.S. doublegang box.



#### Size & Weight

Dimensions (in.)	5-11/16W x 8-5/16D x 5-1/16H
Dimensions (mm.)	145W x 212D x 129H
Weight	1.9 lbs   0.84 kg

#### What's in the box

Camera Mount
Mounting Hardware: (4) Mounting Screws & Washers
(4) Drywall/Masonry Anchors
(1) Quarter Twenty bolt
(4) Device mounting screws for 2-Gang Box