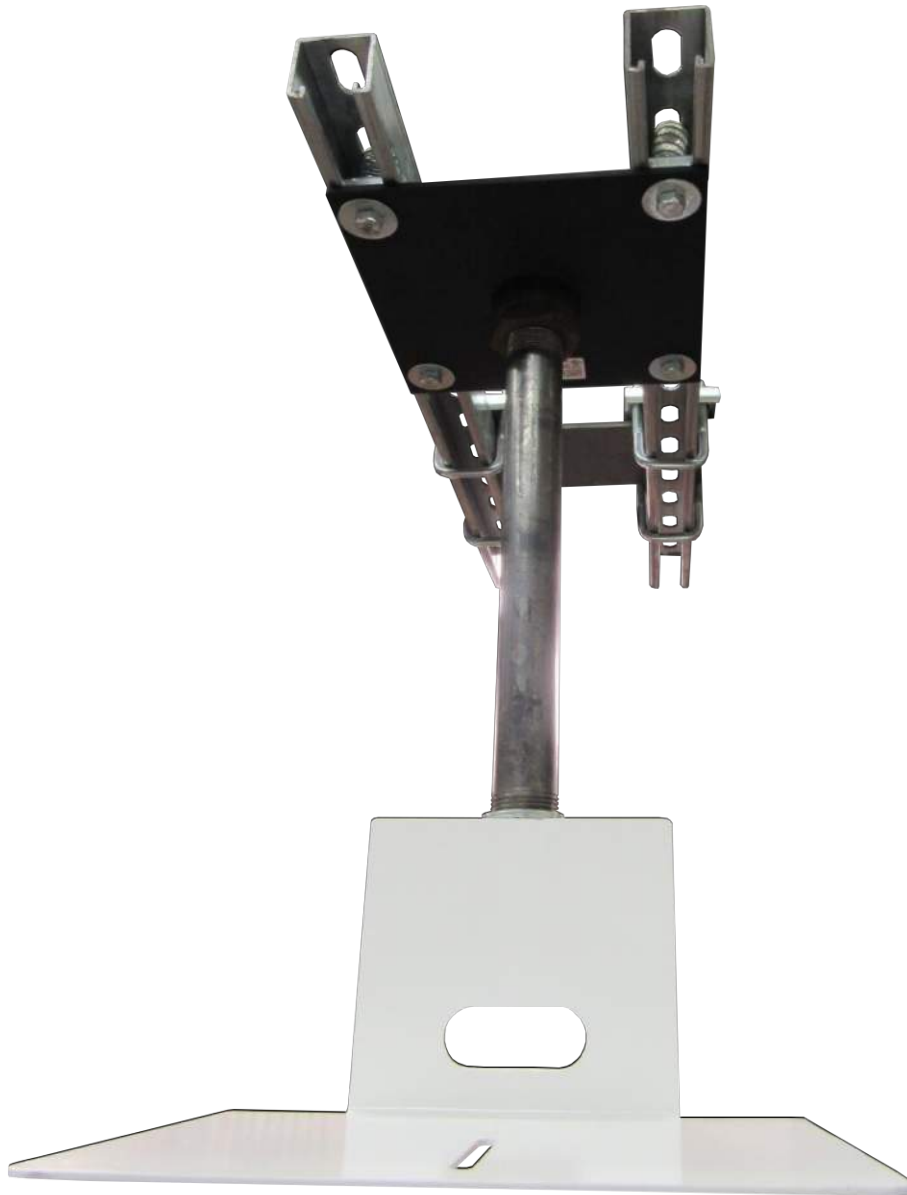




152 Robbins Rd, Downingtown, PA, 19335, USA - HuddleCamHD.com | 1 800 - 486-5276

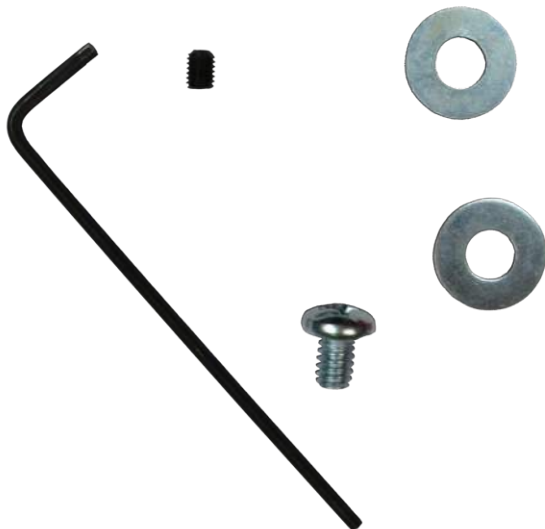
HCM-2C

Camera Ceiling Mount - Large Base Set Up Guide



What's Included:

- 1) Qty 1 - Ceiling Mount
- 2) Qty 1 - 1/4-20 mounting screw
- 3) Qty 1 - 10-32 x 1/4" cup point set screw
- 4) Qty 1 - 3/32" long arm hex wrench (for set screw)
- 5) Qty 2 - 1/4" washers



STEP 1.

Screw 1” NPT pipe or pipe nipple to a properly installed mounting plate or pipe flange like that shown below. Tighten until pipe can no longer be tightened with a pipe wrench. If using a 1.5” plate or flange, you must use a 1.5”-1” inch reducing bushing, like that shown below.



***Notes:**

Plate/flange, reducer bushing, & 1” NPT pipe or nipple not included.

Plate/flange must be installed according to applicable construction codes.

STEP 2.

Screw mount onto pipe securely, engaging a minimum of ½” of pipe into mount. When aligned to desired location, tighten set screw to 30-36 in-lbs of torque (this is approximately when the set screw will stop moving and the long arm - of the provided wrench - will then only bend).



STEP 3.

Mount camera upright to top of mount or inverted to bottom of mount using included $\frac{1}{4}$ -20 bolt through slot in mount. Use 0-2 of the provided washers as required to make bolt snug, so that camera is held in desired position.



STEP 4.

Run cabling through pipe or dress to outside of pipe for a clean installation aesthetic.